
THE WEEK AHEAD AT STEVES MAY 1 TO 5, 2023



STEVES@SD38.BC.CA



SCHOOL: 608-668-6660
EARLY WARNING:
604-668-7866



STEVES.SD38.BC.CA

UPCOMING IMPORTANT DATES

May 9

Track Meet at Minoru

May 11

Welcome to Kindergarten
Popsicles for sale

May 12

Breakfast Club
Spring Fling

May 15-17

Gr. 6 & 7 students to camp

May 18

Freshii lunch

May 19

Pro-D, no school for students

May 22

Victoria Day, school closed

NEXT WEEK'S CALENDAR

Monday, May 1

- PAC Meeting, 6:45 p.m.

Tuesday, May 2

- Advance Band performance at Gateway

Wednesday, May 3

- Games Club
- Jazz Band

Friday, May 5

- Breakfast Club
- Sushi Lovers lunch

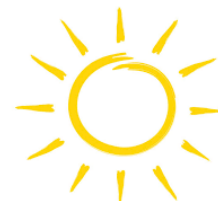


SCHOOL NEWS

- Keep your child's learning journey going strong this summer and sign up now for **Summer Learning 2023**. For more information, go to this website: www.RichmondCE.ca
 - See attached flyer for a virtual session on May 2 for parents: "**Holding onto our Kids in a Digital World**". Register by April 28.
-

PAC/RAM NEWS

- The PAC **Spring Fling** takes place after school on Friday, May 12! We're looking forward to seeing some great cakes for our **Cake Walk**! Please bring your cake to the gym by 9:00 a.m. (can be home baked or bought, but preferably a cake that doesn't need refrigeration).
- Also, if you have prizes for the **Silent Auction**, please bring them to the office on Monday.
- Orders for hot lunches can be made through MunchaLunch. The deadline is the Sunday before the lunch date:
- <https://munchalunch.com/schools/manoahstevess/>



Our School Story in Action

Each week, we will try to share a part of [our School Story](#) and how it applies to our community's daily learning. Our School Story is based on the Core Competencies found in the BC Curriculum.

As we recognize Earth Day, we would like to share some of the students' learning around why this day is important. Classes shared active ways to take care of the earth, responding through artwork and writing pieces. Students built on ongoing learning around Indigenous perspectives and the importance of what it means to be connected to the land.

This links to our [School Story](#) focus in the following way:

Recognizing personal values and choices - "Students define who they are by what they value. They understand how what they value has been influenced by their life experiences. They identify how their values help to shape their choices, in all contexts of their lives."

